



C O L U M B U S
METRO
FEDERAL CREDIT UNION

2019 Annual Report

Financial Report

2019 Year-To-Date

Balance Sheet As of December 31, 2019

| Assets | |
|------------------------------------|------------------|
| Current Assets | |
| Loans to Members | \$186,761,269.28 |
| Less Allowance for Loan Losses ... | (608,969.40) |
| Cash Resources | 2,198,865.57 |

| | |
|--|---------------|
| Investments | |
| Held-To-Maturity Securities..... | \$577.30 |
| Available-For-Sale Securities..... | 5,191.89 |
| Certificates of Deposit..... | 17,955,000.00 |
| Deposits in Corporate One CU . | 18,529,265.97 |
| Deposits in NCUSIF..... | 1,922,130.98 |
| Shares in Central Liquidity Facility . | 607,132.32 |
| Other Investments | 734,581.53 |

| | |
|----------------------------|----------------|
| Fixed Assets | |
| Land & Building | \$3,278,387.71 |
| Furniture & Fixtures | 203,746.38 |

| | |
|--------------------------------------|-------------------------|
| Other Assets | |
| Prepaid Accounts | \$4,411,907.41 |
| Accrued Interest on Loans | 488,418.33 |
| Accrued Interest on Investments..... | 31,224.96 |
| Receivables | 78,646.15 |
| Total Assets | \$236,597,376.38 |

| Liabilities & Members' Equity | |
|-------------------------------|-------------------------|
| Current Liabilities | |
| Accounts Payable | \$37,030.75 |
| Dividends Payable | 99,834.14 |
| Deferred Accounts | 136,168.36 |
| Member Shares..... | 209,537,002.03 |
| Other | 1,670,993.11 |
| Total Liabilities..... | \$211,481,028.39 |

| | |
|--|------------------------|
| Members' Equity | |
| Regular Reserves..... | 1,593,184.30 |
| Undivided Earnings | 25,568,900.06 |
| Accumulated Unrealized Gains (Losses) on Available-For-Sale Securities..... | 129.44 |
| Other Comprehensive Income .. | (2,045,865.81) |
| Net Income..... | 0.00 |
| Total Equity | \$25,116,347.99 |

Total Liabilities & Equity..... \$236,597,376.38

Income Statement As of December 31, 2019

| Income | |
|---------------------------------|------------------------|
| Interest on Loans to Members .. | \$7,296,363.49 |
| Income from Investments | 646,686.58 |
| Fees & Charges | 2,241,884.65 |
| Total Gross Income | \$10,184,934.72 |

| Expenses | |
|----------------------------------|----------------|
| Operating Expenses, | |
| Salaries..... | \$2,453,242.84 |
| Employee Benefits | 965,782.70 |
| Office Occupancy & Operations .. | 1,244,447.55 |
| Travel & Conferences | 33,225.47 |
| Association Dues..... | 16,040.09 |
| Miscellaneous Expenses | 157,671.89 |

| | |
|------------------------|--------------|
| Member Services | |
| Loan Servicing | \$591,464.25 |

| | |
|-------------------------------------|------------|
| Members' Protection | |
| Federal Examination & Supervision.. | 62,004.19 |
| Professional Services | 664,434.88 |

Total Operating Expenses..... \$6,233,839.30

Non-Operating Gains (Losses).....\$37,285.94

Provision for Loan Losses \$308,400.00

Interest & Dividend Expense ... \$2,769,233.26

Net Income \$910,748.10



Financial Report

2018

Balance Sheet As of December 31, 2018

Assets

Current Assets

Loans to Members \$191,269,762.34
 Less Allowance for Loan Losses ... (855,807.60)
 Cash Resources 2,193,756.86

Investments

Held-To-Maturity Securities..... \$687.83
 Available-For-Sale Securities..... 6,303.52
 Certificates of Deposit..... 15,225,000.00
 Deposits in Corporate One CU 8,947,012.47
 Deposits in NCUSIF..... 1,958,118.40
 Shares in Central Liquidity Facility . 590,052.65
 Other Investments 693,781.93

Fixed Assets

Land & Building \$3,348,865.74
 Furniture & Fixtures 108,597.08

Other Assets

Prepaid Accounts \$5,146,490.65
 Accrued Interest on Loans 516,396.84
 Accrued Interest on Investments..... 22,558.71
 Receivables 46,301.10
Total Assets \$229,217,878.52

Liabilities & Members' Equity

Current Liabilities

Accounts Payable \$31,567.82
 Dividends Payable 81,545.57
 Deferred Accounts 105,828.04
 Member Shares..... 202,119,927.48
 Other 2,012,985.49
Total Liabilities..... \$204,351,854.40

Members' Equity

Regular Reserves..... 1,593,184.30
 Undivided Earnings 24,658,151.96
 Accumulated Unrealized Gains (Losses) on
 Available-For-Sale Securities.....187.67
 Other Comprehensive Income.. (1,385,499.81)
 Net Income.....0.00
Total Equity \$24,866,024.12

Total Liabilities & Equity..... \$229,217,878.52

Income Statement As of December 31, 2018

Income

Interest on Loans to Members ..\$7,109,672.35
 Income from Investments432,287.52
 Fees & Charges2,367,390.87
Total Gross Income \$9,909,350.74

Expenses

Operating Expenses,

Salaries\$2,419,496.06
 Employee Benefits894,299.70
 Office Occupancy & Operations ..1,280,638.64
 Travel & Conferences17,299.24
 Association Dues.....17,527.28
 Miscellaneous Expenses83,950.71

Member Services

Loan Servicing\$684,289.96

Members' Protection

Federal Examination & Supervision..77,632.76
 Professional Services608,905.05

Total Operating Expenses..... \$6,084,039.40

Non-Operating Gains (Losses).....\$156,032.23

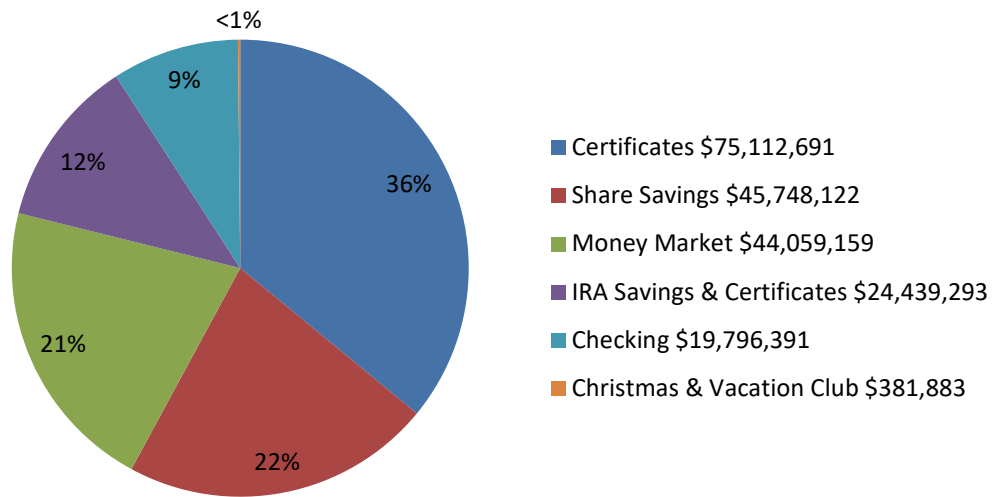
Provision for Loan Losses \$473,392.00

Interest & Dividend Expense ... \$1,968,229.48

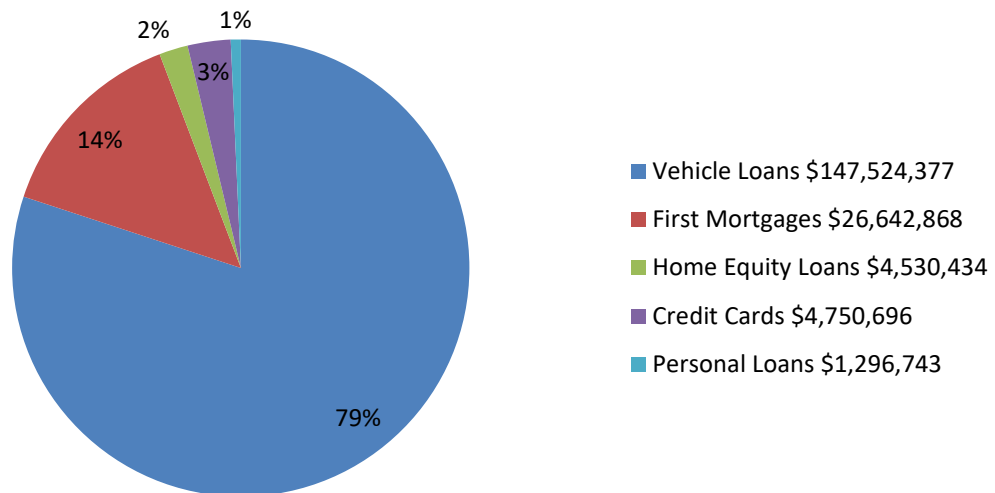
Net Income..... \$1,539,722.09



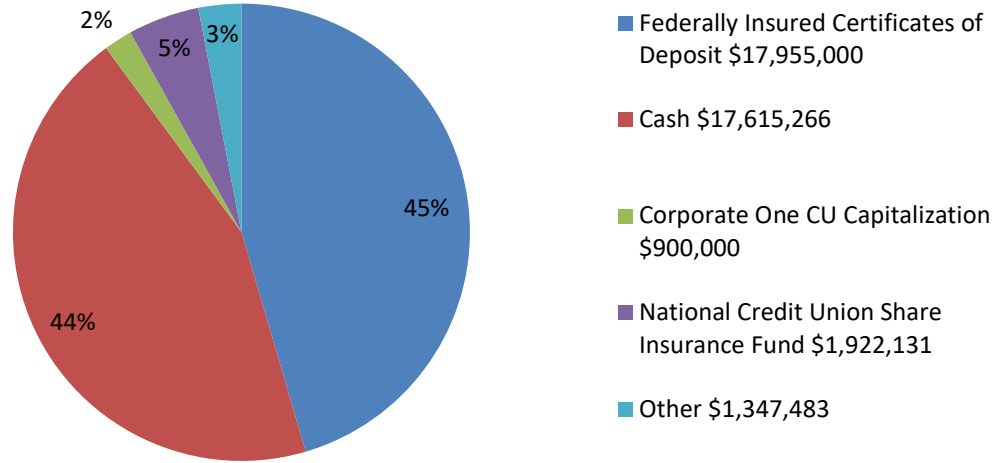
Deposit Portfolio Mix



Loan Portfolio Mix

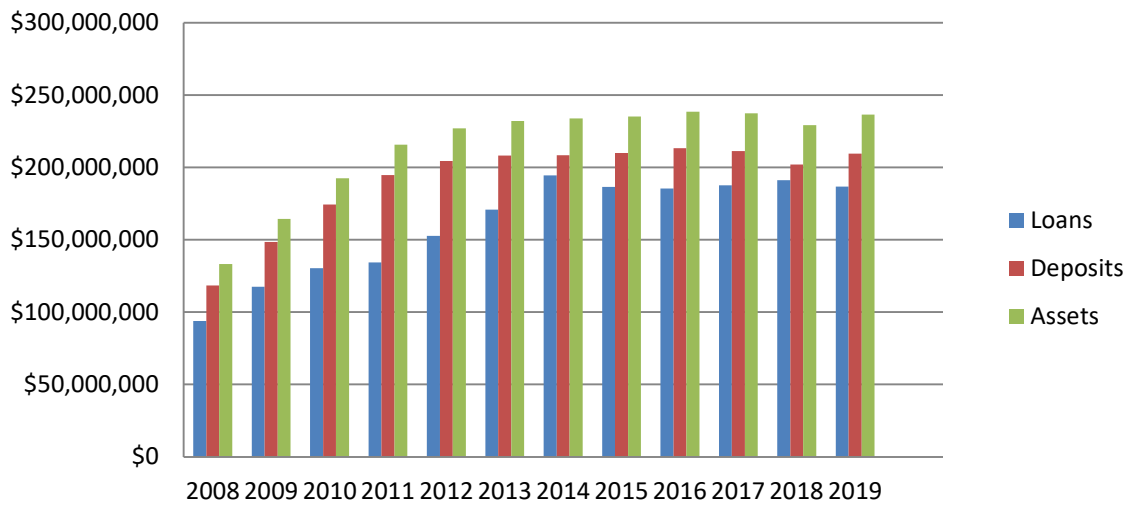


Investment Portfolio Mix



Credit Union Growth

2008 to 2019



Board of Directors

Fred Harris Chairman
George Mussi.....Vice Chairman
J. Mark Wilkerson Treasurer
Larry WattsSecretary
Barbara King.....Director
Chinita Montgomery.....Director
Beverly WilsonDirector

Supervisory Committee

Shirley GreenMember
James W Mock SrMember

Management & Staff

Tim Richey..... President
Jennifer Banker Vice President/Marketing
Michelle Byers ..Electronic Services Supervisor
Teresa Conrad..... Branch Mgr/DFAS & DSCC
Carlos Cuellar-Perez..... Teller Supervisor
Tim Ford.....Collections Manager
Amy Leinard..... Vice President/Lending
Chrissy Martino..... Chief Financial Officer
Pam Menda.... Branch Manager/Reynoldsburg
Jim Miller Human Resources Manager
Zhanna Stout..... BSA/AML Analyst
Alan Webb Information Systems Manager
Heather Williams Compliance Manager
Kia Williams.....Asst IS Manager
Sam Womeldorf..... Branch Manager/Gahanna

Rachel Bowman
Lisa Butcher
Rochelle Butler
Shannon Caple
Emily Denney
Gen Fomba
Jane Green
Cathy Hart
Elizabeth Hayes
Kim Heilbrunn
Amanda Hester
Lisa Kelly
Julie Lee
Kylee Malone
Ann Marie Masterson
Jenniffer McNamee

Stefanie Merriman
Courtney Moore
Sarah Moore
Tiffany Murphy
Theresa Perry
Rose Rauch
Wes Richardson
Amanda St. John
Sophia Stephenson
Dian Summerall
Emanuel Sutton-Freeman
Naneyere Thomas
Angel Thompson
Connie Whiteside
Lori Zschach